



WIS2000 Control Tablet for  
Control OR™ (IPS1000A)

## User's Guide

---

Before connecting, operating or adjusting this product, please read this instruction booklet carefully and completely.

---

# Table of Contents

Introduction . . . . .	3
Parts . . . . .	4
WIS2000 Sample Configuration . . . . .	5
Tablet Dock Mounting . . . . .	6
Docking and Removing the Tablet . . . . .	7
Tablet Start-up. . . . .	8
Tablet Connection Methods and Interface Start-up . . . . .	8-9
The Dashboard . . . . .	10
Dashboard Details . . . . .	11
Adjustment Button and Screen . . . . .	12
Drop Down Menu. . . . .	13-20
I/O Settings . . . . .	14-15
Audio/Video Streaming . . . . .	16-17
Manage User Presets. . . . .	18-21
Network IP Configuration. . . . .	22
Log Out . . . . .	22
Wired Tablet Connection . . . . .	23
Wireless Tablet Connection . . . . .	24
Mechanical Drawing . . . . .	25
Cleaning Instructions . . . . .	26
Contacts. . . . .	28

The specifications and information in this document are subject to change without notice.

---

# Overview



The WIS2000 Control Tablet from FSN Medical Technologies provides medical applications with a single appliance that can control multiple pieces of equipment with the touch of a finger.

The tablet hardware and software have been designed to be used with the FSN's Control OR™ video processor to create an advanced, all-in-one video control system. The system provides source selection, advanced windowing features, easy switching, as well as PIP/PBP mode. The system can be controlled with the tablet securely locked in its docking station, or with the tablet portable and wireless.

## Master Settings

Each room will be setup to provide a similar user experience, using standard signal labels and workflow. Users will have confidence in knowing that each room will function in a similar method, based on available video signals.

## Quick Setup

Units accommodate a number of features to enable users with quick room setup, signal, view and procedure preferences with the push of a button.

## Return to Default Setting

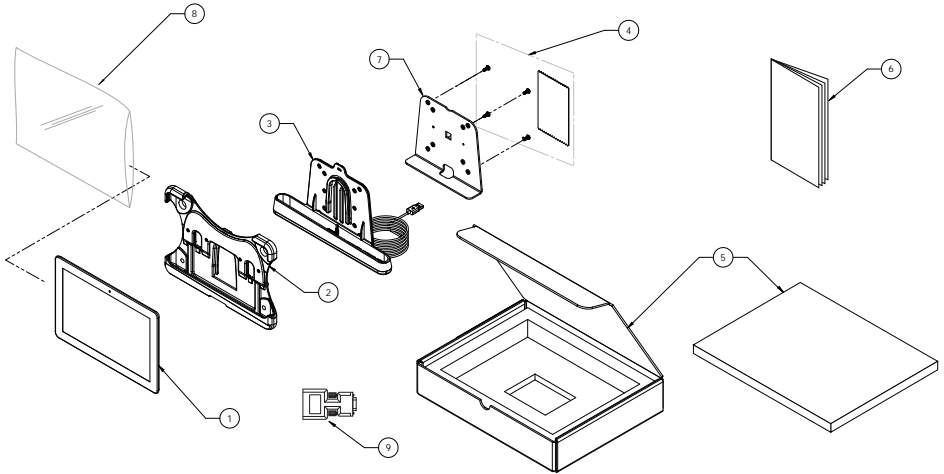
When required, all settings on the tablet can be returned to a predefined administrator default.

FSN's simple tablet user interface has been designed to meet the needs of today's OR environment, where hospital personnel's primary focus is patient care. It excels at meeting this requirement with intuitive simplicity and ease of use.

This User Guide will provide instructions for appropriate product configuration, based upon your hospital's requirements, including:

- Gain basic knowledge to configure settings
- Understand the purpose and function of preset user preferences
- Understand features that are available through Administrator settings
- Understand how to receive technical support within your facility
- Control all preset functions

# Package Contents

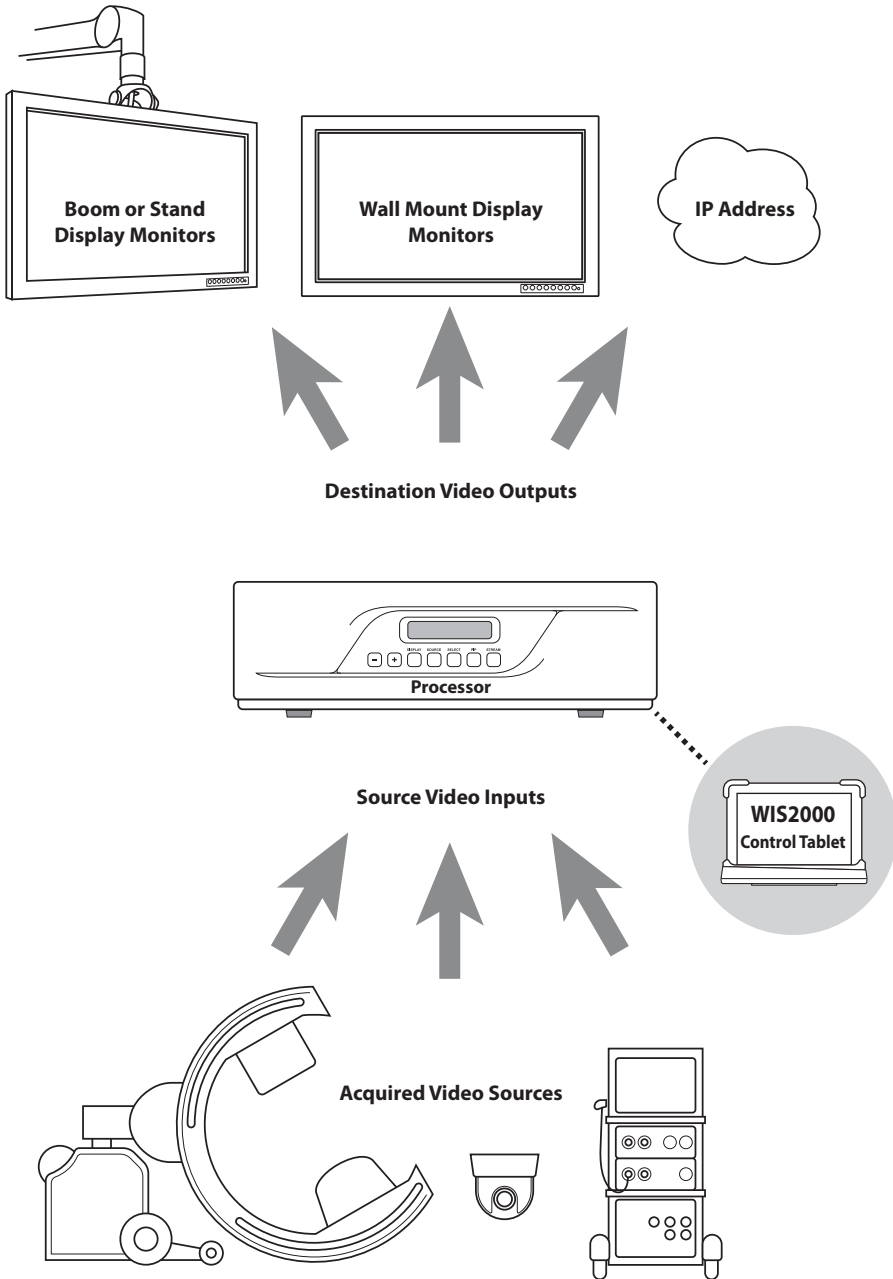


<u>Item</u>	<u>Description</u>	<u>Pack Qty</u>
1	Touch screen tablet.....	1
2	Tablet holder.....	1
3	Tablet dock and connecting cable.....	1
4	Hardware pack.....	1
5	Packaging materials.....	1
6	User guide booklet.....	1
7	VESA bracket.....	1
8	Protective poly bag.....	1
9	WIS0001 accessory and cable.....	1

Verify that all components have been received.

Inspect each component and verify that none of the components have been tampered with in any way.

# WIS2000 Control Tablet Sample Configuration



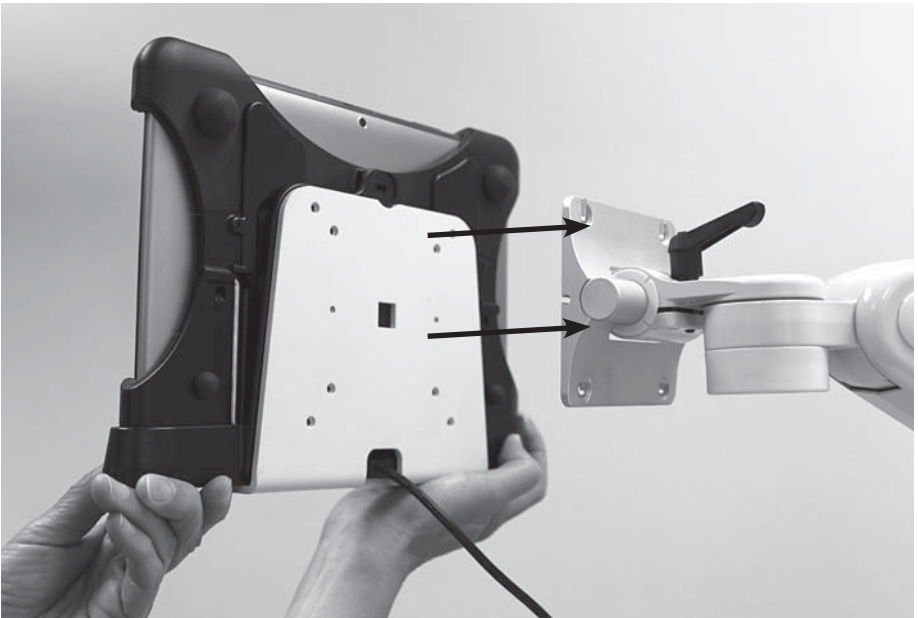
---

## Mounting the Tablet Dock

Determine where the tablet dock will be located. It should be close enough to Control OR so that a wire connection is possible, if required. The tablet dock should also be located where it can connect to AC power for charging, if required.

It is suggested to use a sturdy boom or arm since the tablet will need to dock and undock with some applied pressure. Vesa mounting holes are located on the metal bracket holding the tablet dock.

Unpack the tablet dock and mount it securely, using the provided M4 x 10 screws. Compatible VESA pattern (mm): 75 x 75 or 100 x 100.



# Docking and Removing the Tablet

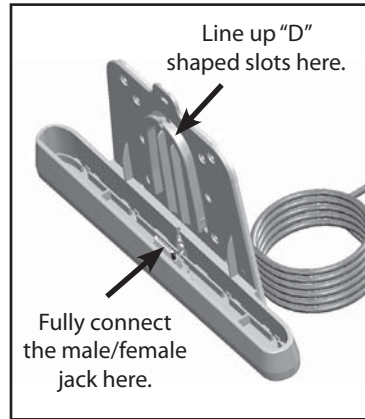
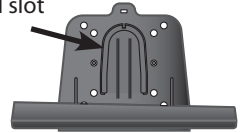
The tablet dock and the tablet holder interconnect at two main points.

The first is a “D” shaped slot on both the holder and the dock. The tablet is lowered into position so that it engages with the slot on the dock.

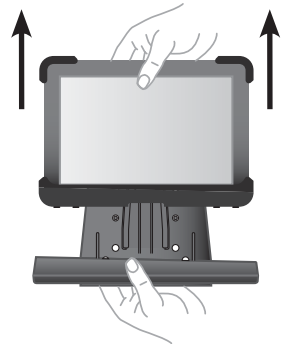
The second connection point is the charging/communication jack located on the bottom edge of the tablet (female) and inside the lower cradle portion of the tablet dock (male). Make sure this connection is fully seated.



“D” shaped slot



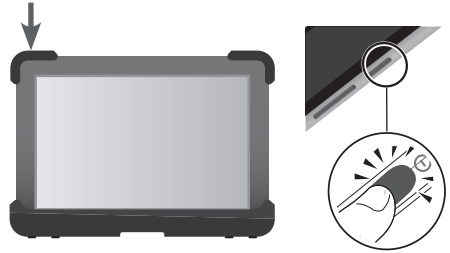
To remove the tablet from the dock, grasp the base of the dock with one hand, and the top of the tablet with the other hand. While holding the dock in position, pull the tablet away and free from the dock.



# Tablet Start-up

## Turning Your Tablet On and Off

Press and hold the Power/Lock Key. If your device has fatal errors, hangs up, or freezes, you may need to reset the device to regain functionality. If your device is unresponsive, press and hold the Power/Lock Key for 8 to 10 seconds.



## Tablet Connection Method and Interface Start-up

The WIS2000 Control Tablet can connect and communicate with the Control OR (IPS1000A) image processor as a stationary hard-wired device, or as a portable wireless device.

### Wired Connection

1. Make sure connections are made as shown on the diagram on page 23.
2. Control OR's System Mode must be set to Wire - Enable (See the Control OR IPS1000A Video Management System Installer User's Guide for instructions).
3. If not already on, turn on power to the tablet.
4. The tablet interface start-up screen will display UART in the lower left corner when a wired connection has been made.
5. Select Log-in.



Wired connection displays UART in the lower left corner.





# Tablet Connection Method and Interface Start-up

## Wireless Connection

1. Make sure connections are made as shown on the diagram on page 24.
2. Control OR's System Mode must be set to Wire - Disable (See the Control OR IPS1000A Video Management System Installer User's Guide for instructions).
3. The active IP address displayed in Control OR's System Mode will need to be entered when prompted by the tablet interface. (See the Control OR IPS1000A Video Management System Installer User's Guide for instructions on obtaining the IP address).
4. If not already on, turn on power to the tablet, and select Log-in on the start-up screen.
5. Enter the IP address, then select Connect.
6. The tablet interface start-up screen will display the IP address in the lower left corner when a wireless connection has been made.
7. Select Log-in.



Wireless connection displays IP address in the lower left corner.



After the tablet has established communicating with the image processor, a list of preset user profiles that have been created is shown. Admin appears in the list automatically. Select your preset profile if it is on the list. If you are the administrator, select the Admin profile to create or to edit other presets.



# The Dashboard



*Sample dashboard is shown with 10 input sources (green) and 5 output destinations (blue).*

After a user profile has been selected, the dashboard is displayed.

The dashboard is where video switching and management is done with the touch of a finger. This is the main screen for viewing the status of equipment that is being controlled by the image processor, and is normally the most used interface for day-to-day activities. Not all dashboards will look the same. Each user's equipment configuration, including names and quantities, will be automatically reflected in each individual dashboard.

Before the dashboard can be properly used, the equipment connected to the image processor should be configured within the tablet interface to reflect all of the desired settings. This is because the look of the dashboard is dynamic. It changes according to selections made in set-up screens outside of the dashboard screen.

# Dashboard Details



The dashboard shown above is one example, not all dashboards will look the same. This is because the look of the dashboard changes according to selections made in set-up screens outside of the dashboard. After configuring inputs, outputs, and users, the dashboard will be a clear representation of what video capabilities are available to the medical staff in the room. Below are descriptions of some important features of the dashboard.

## **A** Routing a video signal

Step 1: press to select a green input source button.

**B** Step 2: press a blue output destination button to send the video signal to that destination. The input source name will appear on the pressed blue output destination button.

## **C** Selecting a screen layout

Press the yellow layout bar to change the screen layout for each individual output destination. Layouts are available in this order:

- Single Image ▶ PIP 1 (corner, small) ▶ PIP 2 (corner, large) ▶ PIP 3 (side by side)
- ▶ PIP 4 (side by side, large) ▶ PIP 5 (side by side, overscan).

The adjust button/screen contains settings for PIP corner location and style. See "Adjust Button/Adjustment Screen" section for full details.

## **D** Adjusting an image

Press the Adjust button to show the adjustments screen. See "Adjust Button/Adjustment Screen" section for full details.

## **E** Swapping images

Press the swap button to change the position of two images on an output destination.

## **F** Freezing an image

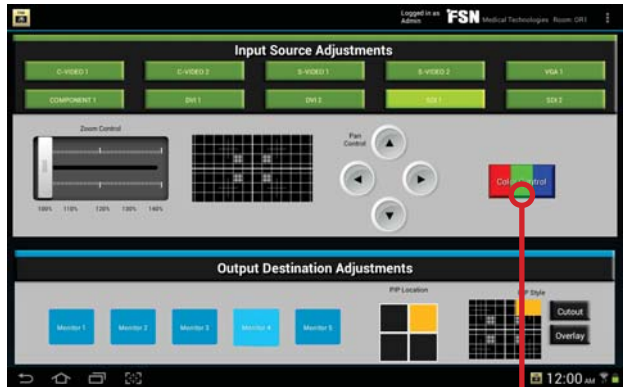
To freeze an image, press the freeze button in the output destination section that is showing the video image to freeze. Press the Freeze button again to restore a live image.

# Adjust Button/Adjustment Screen

The adjustment screen is accessed from the dashboard, using the Adjust button.



Press on the Adjust button located on the dashboard.



**Input Source adjustments** Select a green source button. Use the zoom control to increase image size. Use Pan Control to move a zoomed image.

**Output Destination Adjustments** Select a blue destination button. Press the desired picture-in-picture corner location. Press the desired picture-in-picture style (Picture-in-picture size is picked directly from the dashboard).

Pressing the Color Control button located on the adjustment screen above will bring up this input source color control screen. Select a source; adjust colors as necessary.



Position and Phase Adjust are activated when an analog input source is selected.

When settings are completed, select Dashboard in the top corner drop down menu.

# The Drop Down Menu



The drop down menu is accessed by pressing the three dots in the upper right hand corner.

The drop down menu is located in the upper right hand corner of most screens within the tablet interface. As with the dashboard, the drop down menu changes according to selections made in the set-up process for each user. The administrator has all options available in the drop down menu. If some options in the drop down menu are not available to a user, it is because the administrator has elected not to grant those privileges to the user.

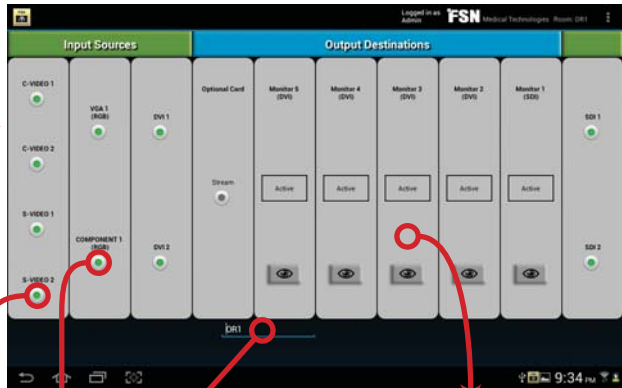
# The Drop Down Menu

## I/O Settings

Select the drop down menu in the upper right hand corner of the tablet screen, and select I/O Settings. The settings screen is where video input sources and output destinations are named, configured, and activated. Changes made to these settings are then reflected in the appearance and function of the dashboard. See Stream/Capture instructions for Optional Card port settings.



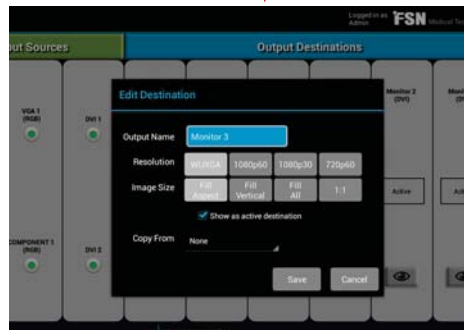
Press on the input or output port that needs adjustment. The Edit screen appears.



Room name if desired.



Edit the settings for input sources as desired, including Name, Show as active, Enable routing. Select Save when finished.



Edit the settings for output destinations as desired, including Name, Resolution, Image size, Show as active. Unchecking Show as active will remove the destination from the desktop.

# The Drop Down Menu

## I/O Settings - Copy From

The Copy From setting will duplicate the image and behaviors from a selected output destination and route them through the destination currently being edited.

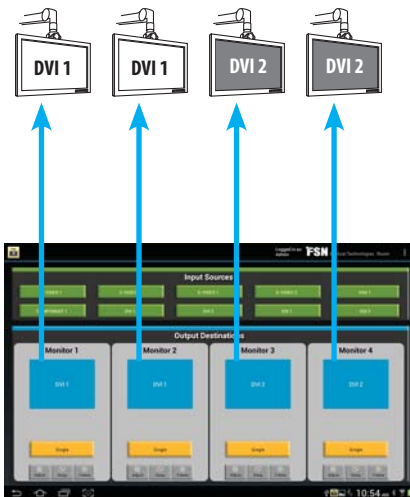


When editing an output destination, select another signal to be copied.

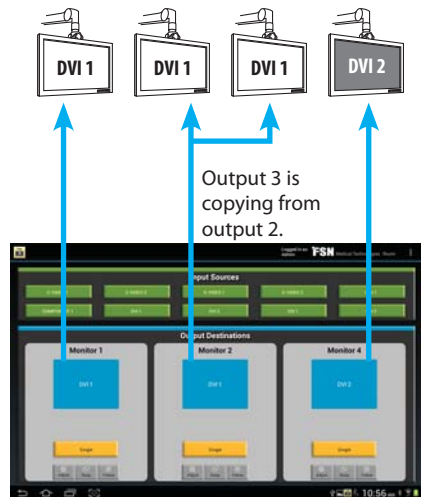
Choose to copy from:

- None
- Output 1
- Output 2
- Output 3
- Output 4

An output destination will not appear on the dashboard if it copies from another output destination. See output copy mapping in figures 1 and 2.



**Figure 1:** Copy From is set to None for all output destinations. This example shows 4 signals going to 4 monitors.



**Figure 2:** Output Copy. This example shows output 3 copying from output 2. Monitor 3 has been automatically removed from the dashboard.

When settings are completed, select Dashboard in the top corner drop down menu.

# The Drop Down Menu

## Stream - Step 1

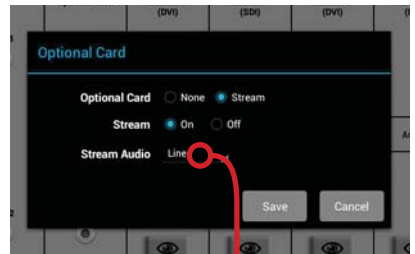
Audio/video streaming is available if it has been enabled by the administrator. All streaming capability resides on the Monitor 5 port. If streaming is used, the Monitor 5 port must be used for output. A client media player, such as FSN\_PLAYER (available for PC), is also required to display the streamed content.



Configure the Optional Card port by selecting I/O Settings from the drop down menu.

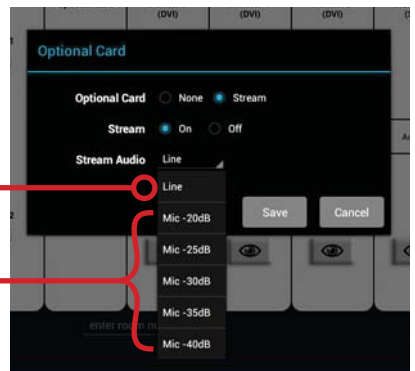


Then, select the Optional Card port. Choose options in the dialog box.



Line is the default setting, and is used to stream MP3 audio from a playing device connected to the Audio In jack on FSN's Control OR video processor.

To stream audio from a microphone, select a Mic dB setting and connect a microphone to the Audio In jack on FSN's Control OR video processor.

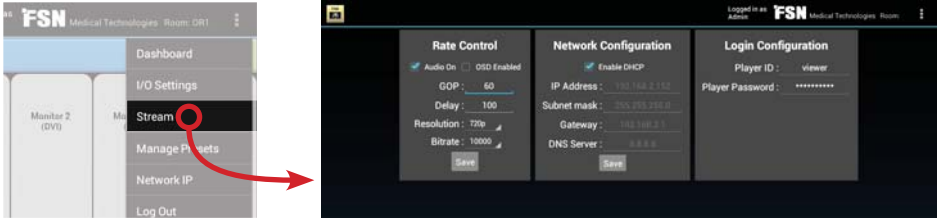


Select Save when finished.



# The Drop Down Menu

## Stream - Step 2



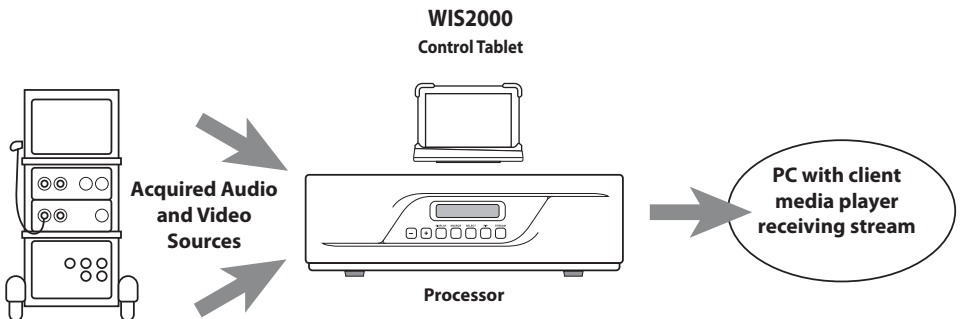
Next, from the drop down menu in the upper right hand corner of the tablet screen, select Stream, then enter the appropriate stream settings for, Rate Control, Network Configuration, and Player Login Configuration, as desired. Select Save when finished.

When settings are completed, select Dashboard in the top corner drop down menu.

The **Monitor 5** label will change from black to blue if audio/video streaming is operational.

To turn off streaming, select I/O Settings from the drop down menu, select the Optional Card port, select Off, and Save.

When settings are completed, select Dashboard in the top corner drop down menu.



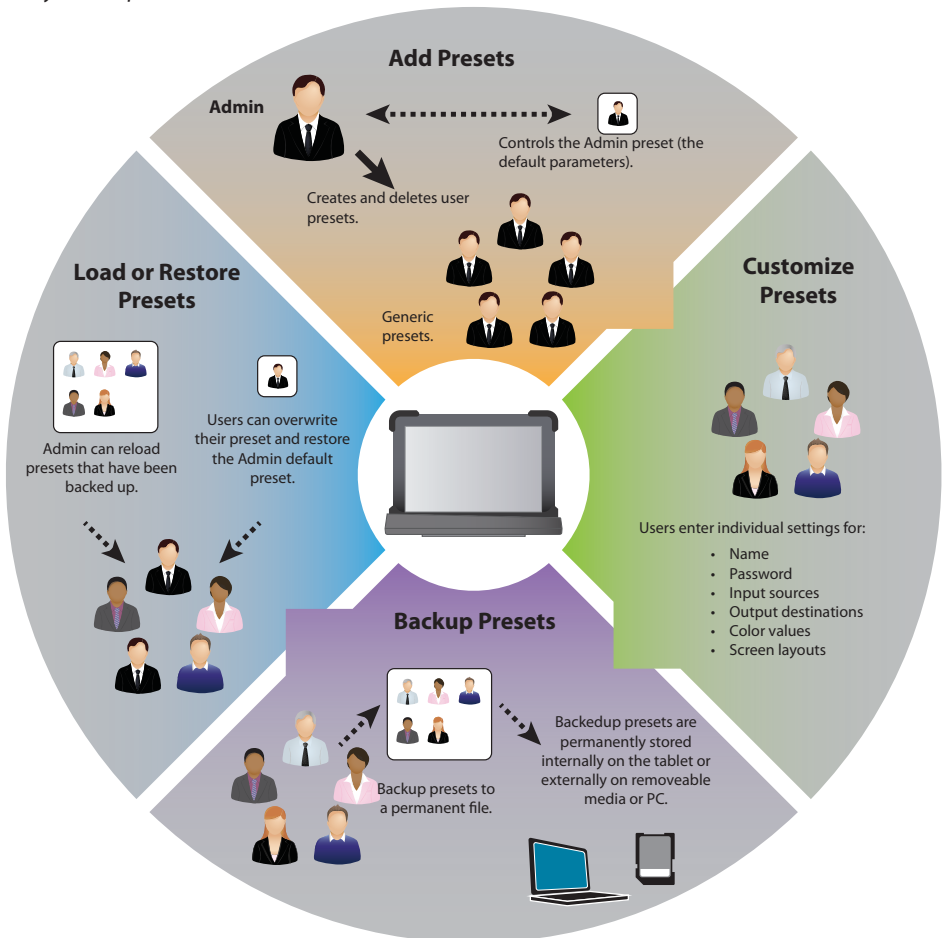
# The Drop Down Menu

## Manage Presets Overview

**Admin preset (factory).** This is the default preset, loaded at the factory, that is shown when the tablet is first turned on. Admin is used to create other presets, which can then be modified to individual user's requirements. New added presets are mirror copies of Admin preset.

**Admin preset (modified).** The Admin preset can be modified and backedup (saved) to the tablet's internal memory, or to an external removable SD card. Admin is used to create other presets, which can then be changed by individual user's to suit their requirements. If Admin preset has been modified, new added presets are mirror copies of the modified Admin preset.

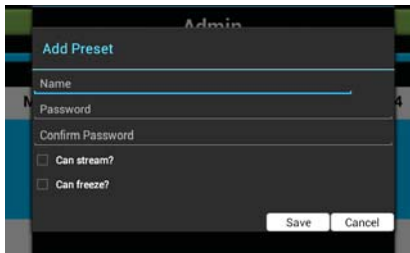
*CAUTION - if the Admin preset is modified and backedup internally and externally, it will overwrite the factory Admin preset.*



# The Drop Down Menu

## Using Admin to Add New User Presets or Load Existing User Presets

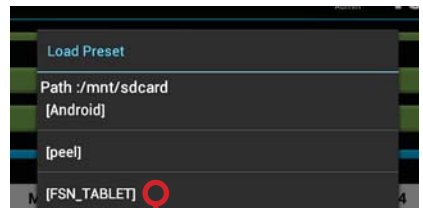
Make sure to login using the Admin preset. Select the drop down menu in the upper right hand corner of the tablet screen, and select Manage Presets. The administrator is given the ability to manage all user preset options.



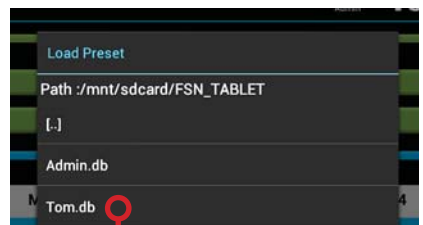
Select Add Preset to configure a new user to the system. Enter the new name, password, and check the desired boxes to give the ability to stream video and freeze a still image from video. If preset privileges for streaming and freezing images are assigned by the administrator, then the user will see these options on their dashboard and drop down menu.

Select Save to record changes to the preset. NOTE: to permanently record changes to a preset, be sure to also select Backup from the Edit Preset screen shown later.

Select Load Preset to activate a saved user preset that has been previously deleted from the login preset list.



Select [FSN\_TABLET]



Select the preset to be re-activated (loaded). It will then be available from the login preset list.

# The Drop Down Menu

## Using Admin to Manage Loaded User Presets

Make sure to login using the Admin preset. Select the drop down menu in the upper right hand corner of the tablet screen, and select Manage Presets. The administrator is given the ability to manage all user preset options. A list of available user presets is displayed.



Administrators can edit, backup, restore, save, and delete presets by selecting a name from the list shown on the Manage Presets screen.

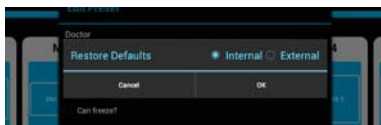


Selecting Backup will save a permanent copy of the preset. Choose Internal to save to the tablet's internal memory, or External to save to a removable SD card. Copies of user presets can also be transferred to a PC for extra backup.



Cancel to exit the Edit Preset screen.

Select Save to record changes to the preset. NOTE: to permanently record changes to a preset, be sure to also select Backup.



Selecting Restore Defaults will remove all custom settings from the selected preset and change it to the Admin preset condition. Choose Internal to restore from the tablet's internal memory, or External to restore from a removable SD card.

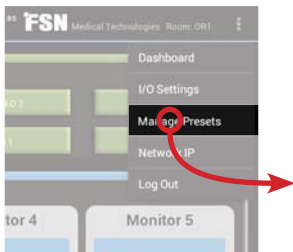
Select Delete to remove a preset from the list of active presets. NOTE: if the preset has been backed up, it can be re-loaded at any time.

# The Drop Down Menu

## Users Managing Their Own Loaded Presets Outside of Admin

It is possible for a user to make and save changes to their own preset. If this is done, it is important for the user to also back up any changes that are to be permanent.

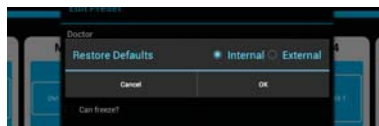
Select the drop down menu in the upper right hand corner of the tablet screen, and select Manage Presets. Users can manage their own presets, including backup, restore, and save. Only the Administrator can delete a user preset.



Selecting Backup will save a permanent copy of the preset. Choose Internal to save to the tablet's internal memory, or External to save to a removeable SD card. Preset copies can also be transferred to a PC for extra backup.

Cancel to exit the Edit Preset screen.

Select Save to record changes to the preset. NOTE: to permanently record changes to a preset, be sure to also select Backup.

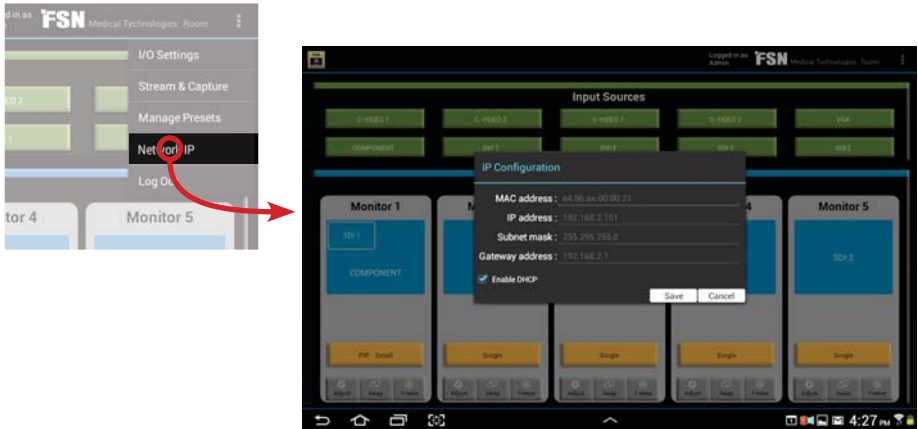


Selecting Restore Defaults will remove all custom settings from the selected preset and change it to the Admin preset condition. Choose Internal to restore from the tablet's internal memory, or External to restore from a removeable SD card.

# The Drop Down Menu

## Network IP Configuration

Select the drop down menu in the upper right hand corner of the tablet screen, and select Network IP.



Select the appropriate IP configuration settings for, MAC address, IP address, Subnet mask, Gateway address, and enable/disable DHCP, as desired.

Select Save when finished.

When settings are completed, select Dashboard in the top corner drop down menu.

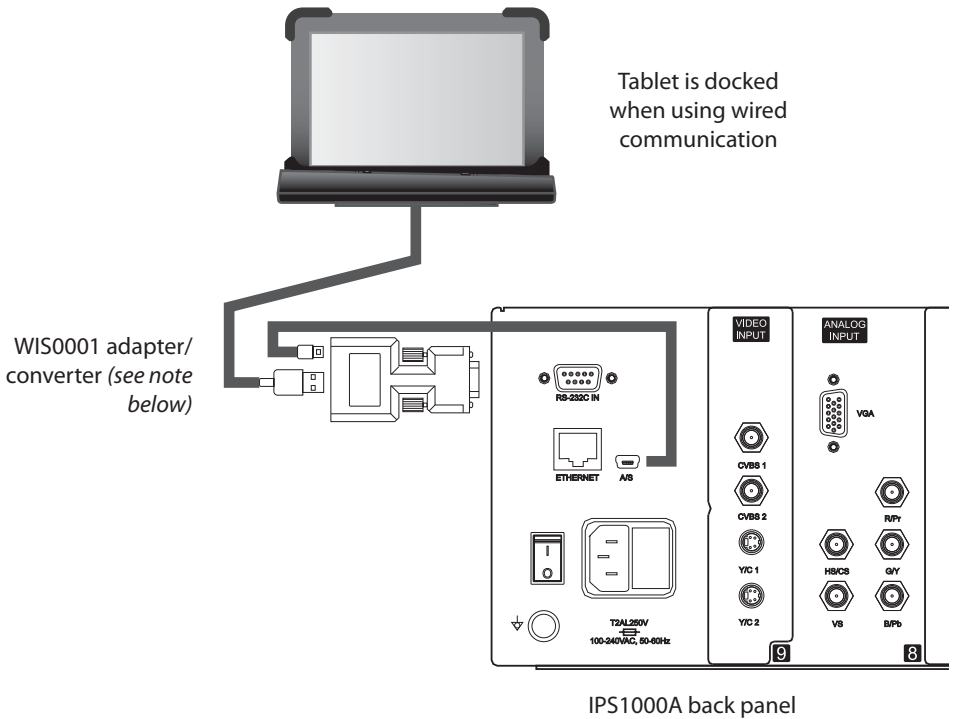


## Log Out

To exit a preset configuration and make the tablet ready for other users, select the drop down menu in the upper right hand corner of the tablet screen, and select Log Out.

# Connect to the Image Processor - Wired

To connect the tablet to the video image processor using a wired connection, use the supplied adapter/converter (AOA). This method does not require that the tablet dock be connected to a wall outlet. The tablet is charged through the connection to the video image processor.



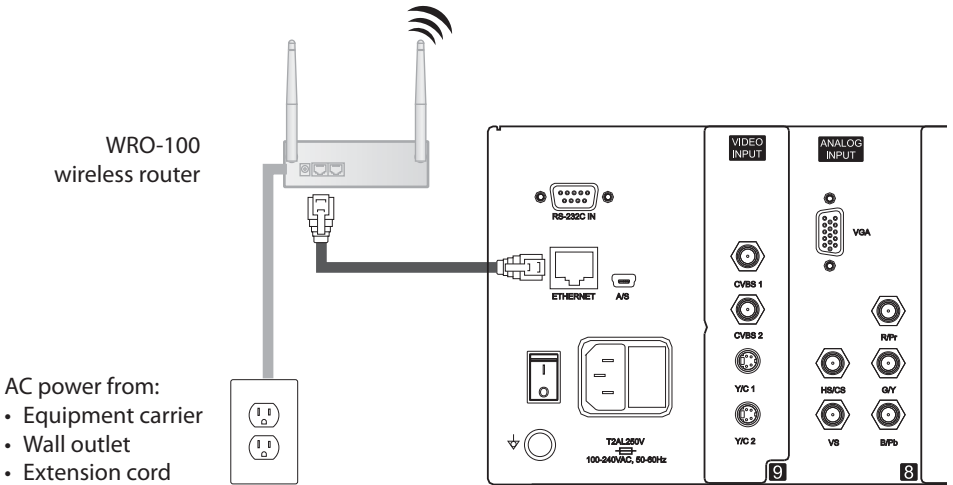
Note: Before connecting the WIS0001 adapter/converter, USB power within the Control OR IPS1000A Video Management System must be activated (System Mode - Wire - Enable). See the Control OR IPS1000A Video Management System Installer User's Guide for detailed instructions on how to access the System Mode in Control OR IPS1000A.

# Connect to the Image Processor - Wireless

To connect the tablet to the video image processor using a wireless connection, use a router such as part number WRO-100 from FSN. This method requires that the tablet dock be connected to a wall outlet in order to charge the tablet when needed.

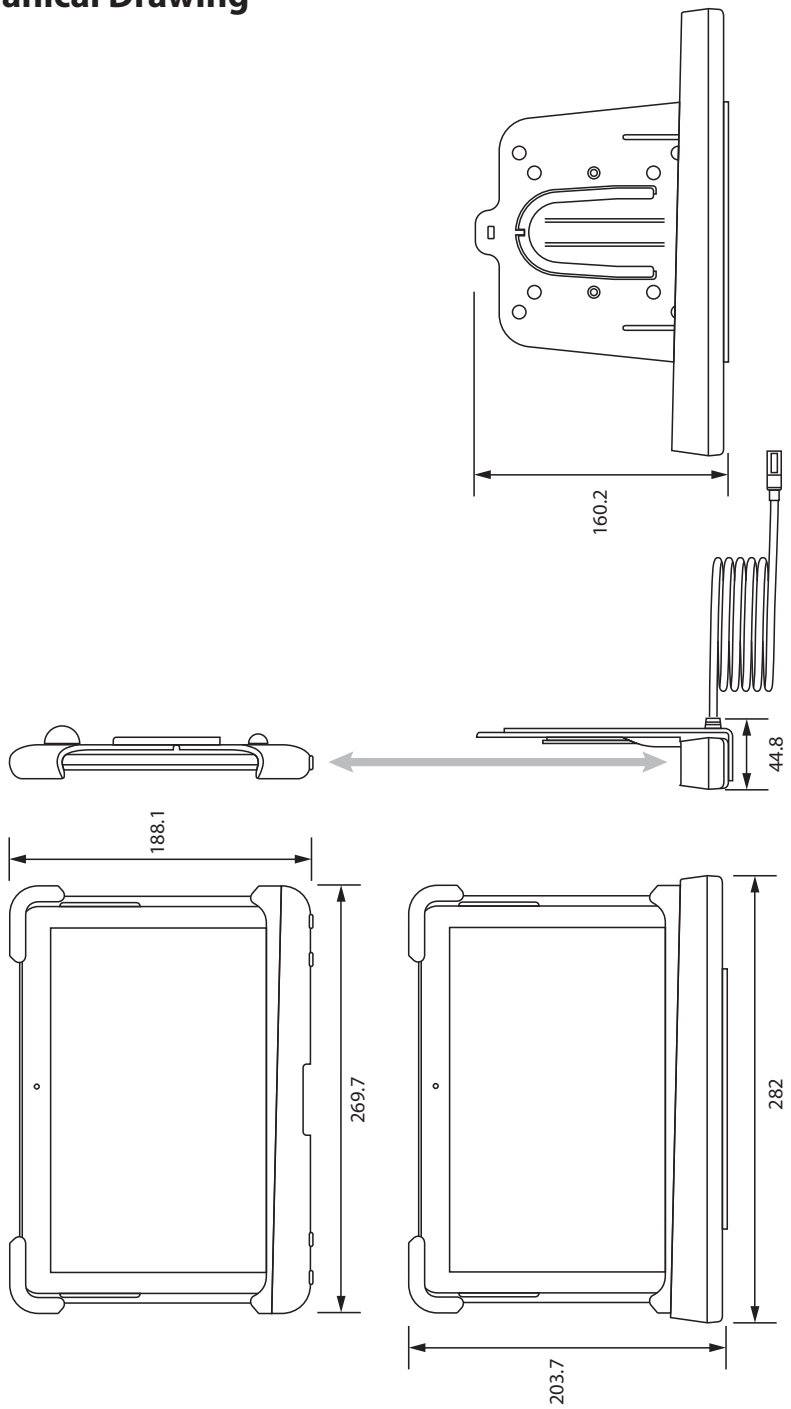


Tablet can be mobile when using wireless communication





# Mechanical Drawing



---

# Cleaning Instructions

## **CAUTION:**

Before cleaning, switch the display into standby mode to prevent the tablet from being accidentally activated. In standby mode the touch panel Tablet cannot be accidentally activated. To switch the display on again, press the standby key.

**Note:** The tablet is not disinfected or packed in a sterile environment. Follow your hospital protocol for the handling of blood and body fluids.

Keep the tablet away from liquids of any kind. Keep the tablet dry. Precipitation, humidity, and liquids contain minerals that will corrode electronic circuits. If the tablet does get wet, do not accelerate drying with the use of an oven, microwave, or dryer, because this may damage the mobile device and could cause a fire or explosion. Do not use the tablet with a wet hand. Doing so may cause an electric shock to you or damage to the tablet.

Clean the tablet with a diluted mixture of mild detergent and water applied to a soft towel or swab. Do not use harsh chemicals, cleaning solvents, or strong detergents to clean the tablet. Use of certain detergents may cause degradation to the labels and plastic components of the product. Consult cleanser manufacturer to see if agent is compatible. Do not allow liquid to enter the tablet.

## **Extreme heat or cold**

Avoid temperatures below 0°C / 32°F or above 45°C / 113°F.

## **Microwaves**

Do not try to dry your tablet in a microwave oven. Doing so may cause a fire or explosion.

## **Dust and dirt**

Do not expose your tablet to dust, dirt, or sand.

## **Shock or vibration**

Do not drop, knock, or shake the tablet. Rough handling can break internal circuit boards.

## **Paint**

Do not paint the tablet. Paint can clog the device's moving parts or ventilation openings and prevent proper operation.



# Thank you for choosing our product.

## Service

Please contact our customer service if you need any information or help with our products.

## Warranty

One year, parts and labor.

EC Representative

### **FORESEESON GmbH**

Industriestrasse 38a, 63150 Heusenstamm, Germany

Tel. +49(0)6104-643980

### **FORESEESON UK Ltd.**

Unit 71, Barwell Business Park

Leatherhead Road, Chessington, Surrey

KT9 2NY, UK Tel. +44-(0)208-546-1047

### **FORESEESON KOREA**

404B, PangyoInnovalley B, 253 Pangyo-ro, Bundang-gu,

Seongnam-si, Gyeonggi-do, Korea, 463-400

Tel. +82(31)8018-0780 Fax. +82(31)8018-0786

### **FORESEESON (Shanghai) Medical Equip. Co., Ltd.**

Room 307, 3F No. 56, 461 Hongcao Road

Caohejing Development District

Xuhui, Shanghai 200233 Tel: 86-21-6113-4188

### **FORESEESON CUSTOM DISPLAYS, INC.**

2210 E. Winston Road, Anaheim, CA 92806 USA

Tel. 1-714-300-0540 Fax. 1-714-300-0546



### **D&T Inc.**

Jang-dong, Daedeok Valley, 26-121, Gajeongbuk-ro,

Yuseong-gu, Daejeon, Korea, 305-343

Tel. + 82(42)360-8000 Fax. +82(42)360-8005

Specifications are subject to change with or without notice.



[www.fsnmed.com](http://www.fsnmed.com)

**FSN**  
Medical Technologies